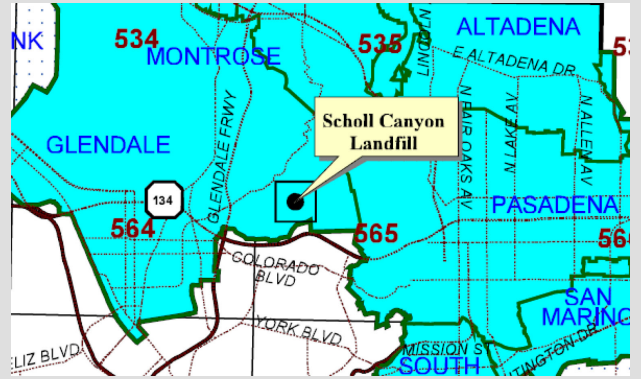


STOP SCHOLL CANYON DUMP EXPANSION: DON'T POLLUTE OUR AIR TO DUMP THEIR TRASH



SINCE WHEN IS DAMAGING OUR AIR QUALITY "UNAVOIDABLE"?

The City of Glendale wants to expand the Scholl Canyon dump, keeping it from closing in 2021 and extending its life to 2040.

The draft Environmental Impact Report (EIR) clearly states that dump expansion will result in unavoidable adverse impacts related to air quality even after mitigation.

The only access to Scholl Canyon dump is through Eagle Rock. Diesel exhaust will accumulate at concentrated levels. Diesel exhaust is a deadly carcinogen.

EPA SAYS OUR AIR IS ALREADY UNHEALTHY

We are currently at non-attainment for 8-hour ozone as set forth by the EPA and already exceed the South Coast Air Quality Management District (SCAQMD) mass daily thresholds and localized significance thresholds for NOx, PM10, and PM2.5.

Source: Draft EIR Scholl Canyon

We are already disproportionately burdened by multiple sources of pollution.

Source: California Office of Environmental Health Hazard Assessment

What is NOx? Ozone is formed when nitrogen oxides (NOx) and volatile organic compounds react with sunlight and hot temperatures. Ground-level ozone can reduce lung function, inflame the linings of the lungs, or scar lung tissue.

What are PM2.5 and PM10? The EPA measures particles based on two different sizes: fine (2.5 microns or smaller) and Coarse (2.5 - 10 microns). These are the particle sizes that are most likely to be breathed into your lungs, and therefore the most dangerous.

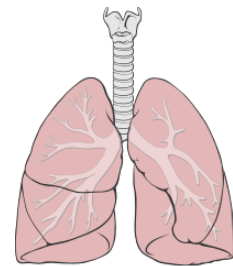
Those Most Susceptible to the Influences of NOx, PM10, and PM2.5.



Young children and seniors



Healthy active people who spend time outdoors, especially on hot days.



People with lung diseases (emphysema, COPD, bronchitis, asthma)

TELL THE CITY OF GLENDALE ADVERSE IMPACTS TO AIR QUALITY ARE AVOIDABLE. DON'T EXPAND SCHOLL CANYON.

Community Meeting **with City of Glendale Staff**

July 31, Thursday

6:30 - 8:00 pm

Eagle Rock Recreation Center
1100 Eagle Vista Drive, 90041

Sign TERA's petition at
www.TERA90041.org

Call Councilmember
Jose Huizar at
213-473-7014

Send your assessment of **"Adverse Impacts" to:**

Ms. Debra Bogdanoff
Senior Engineer
Sanitation Districts of LA County
1955 Workman Mill Road
Whittier, CA 90601
sclfeir@lacsdc.org